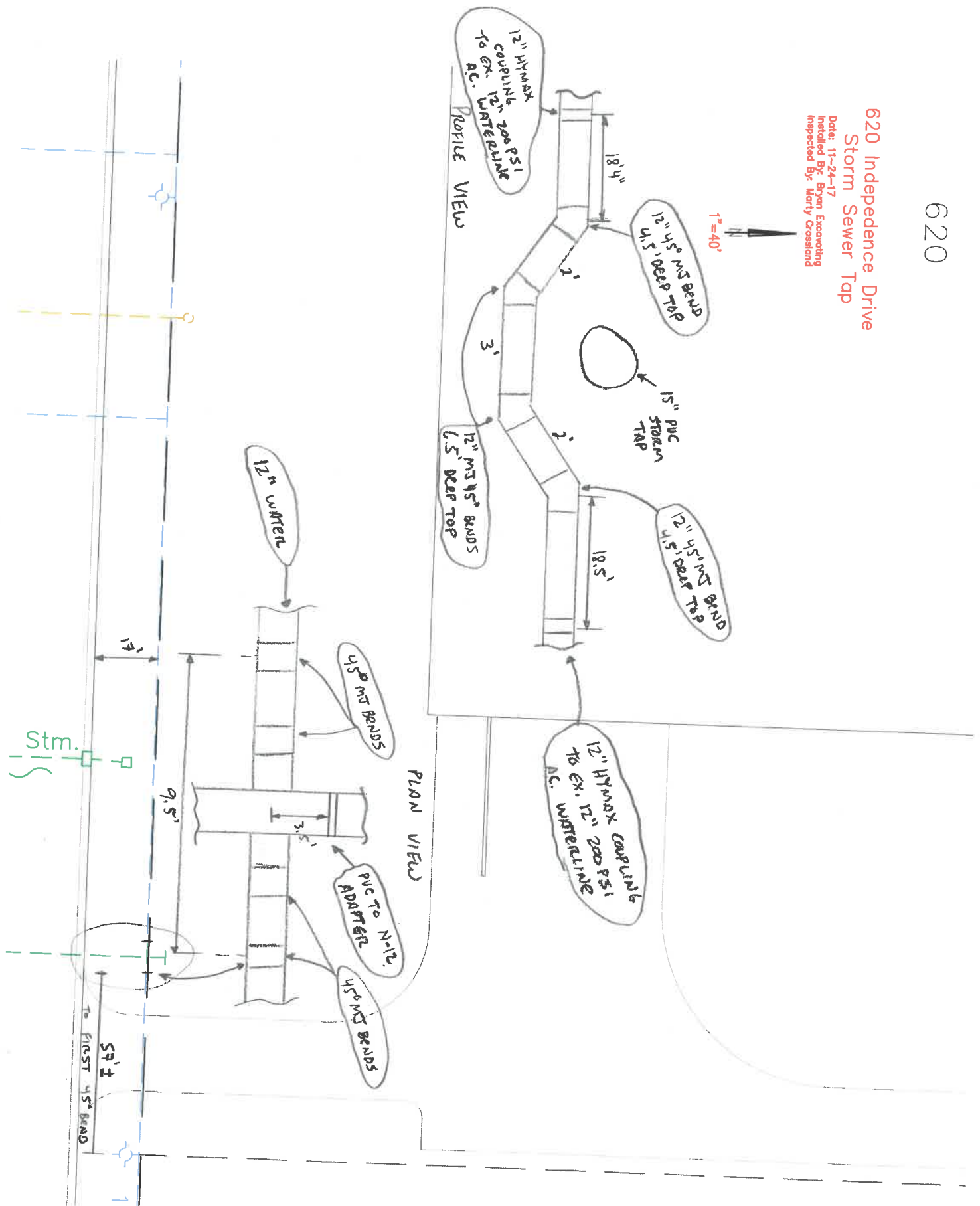


620

620 Independence Drive
Storm Sewer Tap

Date: 11-24-17
Installed By: Bryan Excavating
Inspected By: Marty Crossland



NEXT TUESDAY

620 Independence Drive
 FF = 681.00 (Base Elev.)

Used FF as BM

Inspected by
 A. Deblin 11/21/17

- 1. 116.5'
- 2. 116.5'
- 3. 83'
- 4. 669.47
- 5. 668.32

- 1. 53' from CB-1
- 2. 53' from CB-1
- 3. 78'
- 4. 675.00
- 5. 675.84

8" On 12" Tapping Valve
 With M.J. Plug
 T.O.P. = 674.5±

83 L.F. ~ 6" PVC Sanitary
 With Cleanout @ 1.0%
 Inv. Elev. = 668.6±

78 L.F. ~ 15" PVC
 Storm @ 1.0%
 Inv. Elev. = 675.3±

Independence Dr.

M.H. No. 1
 Rim Elev. = 680.2
 12" E. Inv. = 667.51

M.H. No. 2
 Rim Elev. = 680.33
 12" W. Inv. = 667.83

6" On 12" Inserta Tee

15" On 18" Tee &
 Transition Fitting With
 Flexible Couplings And
 Stainless Steel Bands

C.B. No. 1
 Rim Elev. = 679.01
 18" E. Inv. = 674.41



| | |
|------------------------------------------------------------------------------------------|-----------------------------------------------------------------------------------------------------|
| Checked By | |
| Revision | |
| Date | |
| No. | |
| Plans Prepared By | City of Napoleon Engineering Department Chad E. Lulfs, P.E., P.S. Director of Public Works |
| City of Napoleon Engineering Department | 255 West Riverview Avenue Napoleon, Ohio 43543 Phone: (419) 582-4010 Fax: (419) 599-5393 |
| <p>City of Napoleon 620 Independence Dr. Proposed Service Taps</p> | |
| Created: 11/13/17 | Plotted: 11/13/17 Scale: 1"=20' |
| Drawn: Mark B. Spless | Approved: Chad E. Lulfs Utility Planning |
| Sheet 00 of 00 | |

020

620 Independence Drive
FF = 681.00 (Base Elev.)

8" On 12"
Tapping Valve
With M.J. Plug
T.O.P. = 674.5±

- 1. 116.5'
- 2. 116.5'
- 3. 83.0'
- 4. 669.47
- 5. 668.32

- 1. 53.0' (C.B. #1)
- 2. 53.0' (C.B. #1)
- 3. 78.0'
- 4. 675.00
- 5. 673.84

12" W.M. (A.C. Class 200)

Independence Dr.

15" Stm.

15" Stm.

15" Stm.

18" Stm. (N-12 HDPE)

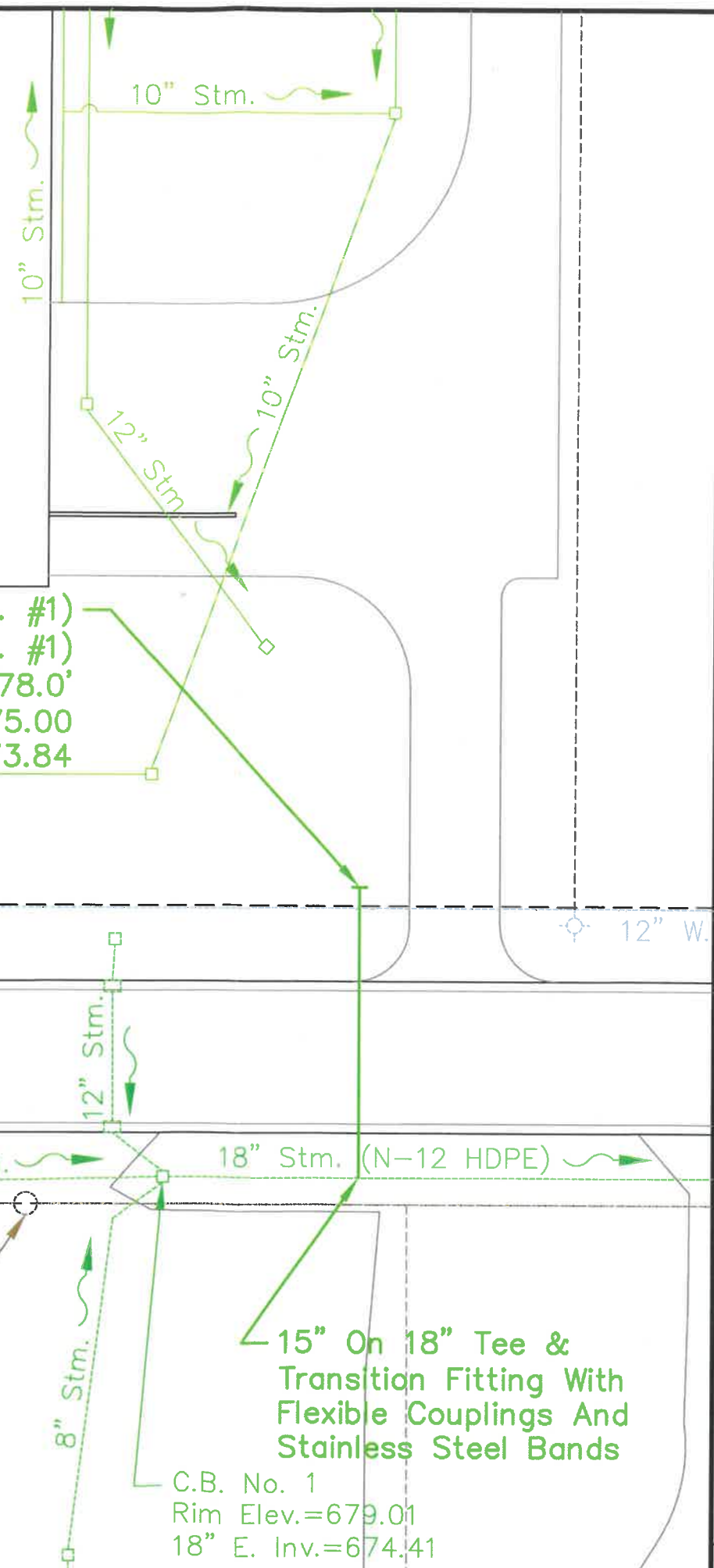
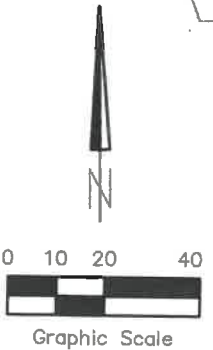
PVC 12" San.
6" On 12" Inserta Tee

M.H. No. 1
Rim Elev.= 680.21
12" E. Inv.= 667.51

M.H. No. 2
Rim Elev.= 680.33
12" W. Inv.= 667.83

15" On 18" Tee &
Transition Fitting With
Flexible Couplings And
Stainless Steel Bands

C.B. No. 1
Rim Elev.= 679.01
18" E. Inv.= 674.41



| | | | |
|-------------------------------------------------------------------------------------------------------------------------------------------------|-------------------------|---------------|-----------------|
| Created: 12/4/17 | Plotted: 5/31/18 | Scale: 1"=20' | Sheet: 00 Of 00 |
| Drawn: Mark B. Spless | Approved: Chad E. Lufis | | |
| Drawing Name: Utility Plan.dwg | | | |
| City of Napoleon 620 Independence Dr. Proposed Service Taps | | | |
| City of Napoleon Engineering Department 255 West RiverView Avenue Napoleon, Ohio 43545 Phone: (419) 592-4010 Fax: (419) 598-8393 | | | |
| Plans Prepared By: City of Napoleon Engineering Department Chad E. Lufis, P.E., P.S. Director of Public Works | | | |
| No. | Date | Revision | Chkd. By |